

# Senior Services

## Bartow Senior Services

Bartow Senior Services (BSS) operates two senior centers that offer a variety of social and informational programs for the county's senior residents. Residents from all over the county, including residents from Adairsville, White, Emerson, Euharlee, Kingston and Emerson attend popular BSS events.

The largest center, located on Beavers Drive near the Hamilton Crossing Park Complex, opened in 2005 and has a capacity of 300. The second center, located on Zena Drive in Cartersville, has a capacity of approximately 200. The Zena Drive location continues to experience space shortages during popular events even after the opening of the Beavers Drive location. The Beavers Drive location currently has sufficient capacity for most programs, but recent trends in new program participants and general population growth over the coming years will soon tax this facility as well. In 2006, an average of 40 new participants per month are attending BSS events.

The chart presented on the following pages entitled *Bartow Senior Services Monthly Participation Counts, January 2004 – May 2006* summarizes the trend in the number of program participants each location has served on a monthly basis since 2004. By November of 2004, the Zena Drive location was serving over 4,000 seniors each month. With the opening of the Beavers Road location in January 2005, participation at the Zena Drive location declined slightly from the highs of November 2004, but participation at Zena Drive remained steady through the most active months of the year in 2005. Participation in the early months of 2006 has fluctuated around 3,000 persons per month.

Participation at the Beavers Road location in 2005 fluctuated around an average of 1,100 per month. Given its location and proximity to underserved areas of the county, participation rates at this location will undoubtedly increase over the coming years.

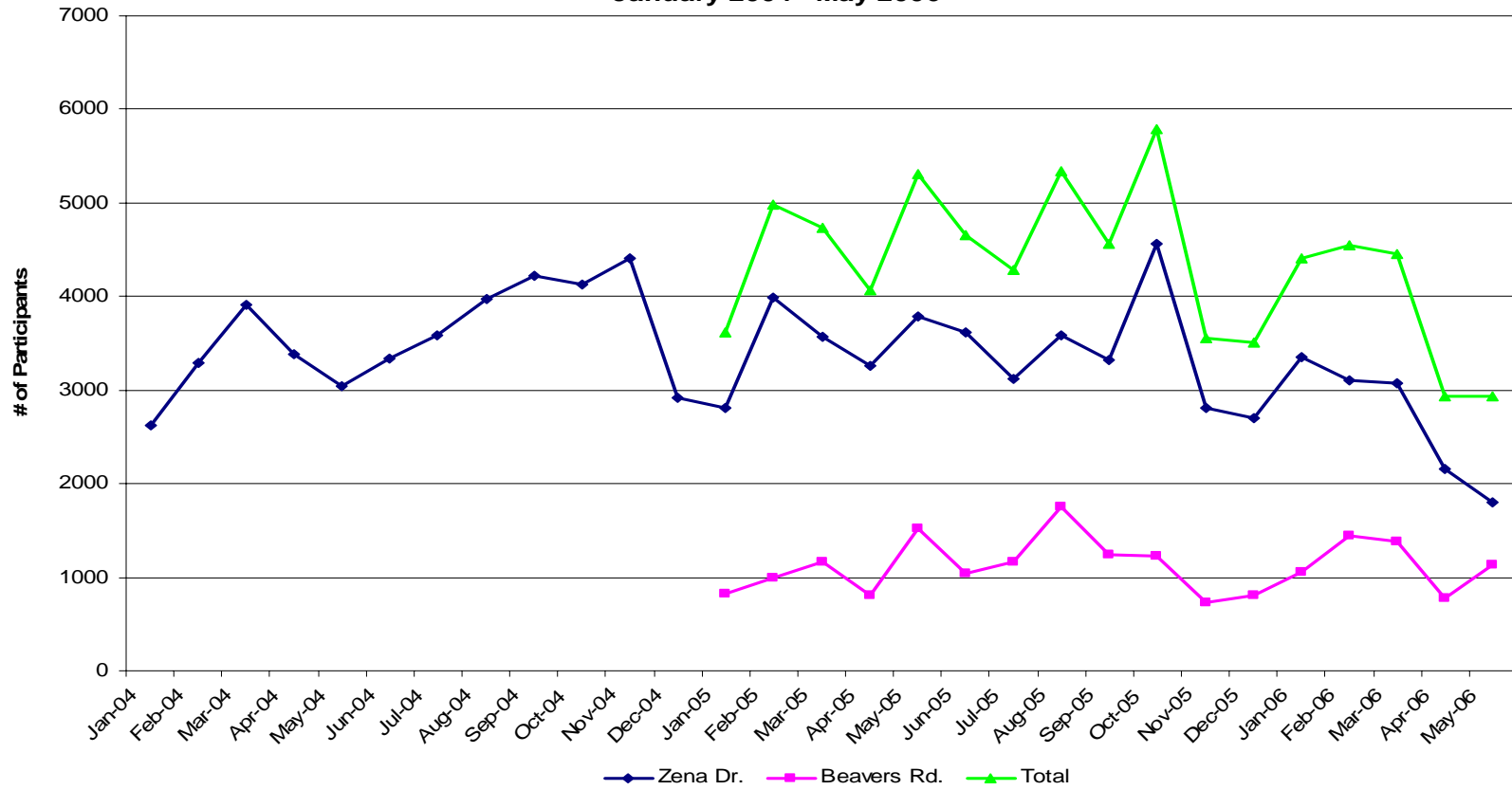
BSS has recently hired a program coordinator who will develop an outreach program to take informational programs into the smaller communities throughout the county. These outreach programs will be particularly attractive to those seniors who are not able to travel easily outside of their own communities to programs at the BSS centers.

## City of Euharlee Senior Services

The city of Euharlee has recently constructed its own senior center as part of its new City Hall Complex. The complex contains a meeting room that can accommodate up to one hundred persons for meetings and seventy-five for meals. The center includes a kitchen with a commercial grade stove, a refrigerator and microwave oven. Euharlee Senior Citizens currently hold regular monthly meetings with average attendance between 30-40 people.

The senior population in Euharlee is expected to grow to over 3,000 by 2025. The city estimates its current facility can serve a senior population of up to 1,000. Population projections suggest the city will reach this figure by the year 2015, by which time the city will need to expand its current facility or construct a new facility in order to adequately serve its senior population between the years 2015-2025.

**Bartow Senior Services  
Monthly Participation Counts  
January 2004 - May 2006**



# Parks and Recreation

## Bartow County Parks and Recreation

The Bartow County Parks and Recreation Department operates seven parks and three greenspace areas. Total estimated park visitation in 2005 was 36,456. The county's facilities and amenities are described below.

### **Bartow Carver Park**

This 435 acre park is located on Glade Road on Lake Allatoona near Red Top Mountain State Park. Facilities include baseball/softball field, a lake, picnic facilities, a children's playground, public restrooms and walking/jogging trails. Rental facilities also are available for private gatherings.

### **Bartow Gatewood Park**

Located off of Spur 20 Road near Allatoona Dam, this 260 acre park includes the lake, picnic facilities, a children's playground, public restrooms and walking/jogging trails.

### **Center Road Park**

Located on Center Road at Spur 20 Road, resources at this 15 acre park include walking/jogging trails, public restrooms and rental facilities for private gatherings.

### **Hamilton Crossing Park**

Located on Hamilton Crossing Road, this 72 acre park includes baseball/softball fields, basketball courts, football/soccer fields, a gymnasium, a children's playground, public restrooms, tennis courts and walking/jogging trails. The county operates many of its youth sports leagues activities at this location. Rental facilities for private gatherings also are available.

### **Manning Mill Park**

Located near Adairsville, this 44 acre park includes baseball/softball fields, basketball courts, football/soccer fields, a gymnasium, a lake, a children's playground, public restrooms and walking/jogging paths. The county operates some of its youth sports leagues activities at this location. Rental facilities for private gatherings also are available.

### **South Bartow Park**

South Bartow Park is a relatively small five acre park that offers a baseball/softball/soccer field, playground equipment, a picnic shelter and a 2-mile walking trail.

### **Taylorsville Park**

Taylorsville Park, which is maintained by the county, has a baseball/softball/soccer field.

### **Beazley Gap Greenspace Area**

This greenspace area of approximately 300 acres is located on Hwy. 140 near the Cherokee County line. The county recently has received a grant to develop the park for limited public recreational use (primarily a walking trail).

### **Hurricane Hollow Greenspace Area**

This park is located east of I-75 off of Main Street. Hurricane Hollow is approximately 40 acres in size and is adjacent to a larger tract (200 acres) owned by the City of Cartersville (known as Pine Mountain Park). Hurricane Hollow contains hiking trails.

### **Springbank Greenspace Area**

This area of approximately 35 acres is located on Hall Station Road between Kingston and Adairsville.

The county also has recently acquired two additional greenspace areas along the Etowah River. One area of approximately 200 acres is located on Paga Mine Road; the second area of approximately 50 acres is located on the river near Euharlee. These areas have not yet been developed.

The county has a contractual agreement with the county school system that allows the county to utilize various school gymnasiums for park and recreational programs. The elementary schools also have playground equipment that is accessible to the public.

The county offers youth recreational programs for baseball, softball, football, cheerleading, soccer, basketball, dance, karate and tennis.

Most of the individual cities have their own public parks. Adairsville has no active public parks within the city limits. The county's Manning Mill Park is close to Adairsville, however, and can serve these residents. Cartersville has an extensive Parks and Recreation system and a detailed description of that system is provided later in this section. The table "*Resource Inventory in Park and Recreational Facilities: Bartow County and Respective Municipalities*" at the end of this section provides a visual summary of the recreational resources available in publicly owned parks in Bartow County.

Parks in the smaller individual cities include the following:

## **City of Emerson**

### **Emerson-Allatoona Lake Park**

Emerson maintains a three acre park at 325 Old Allatoona Road. This park, the Emerson-Allatoona Lake Park, includes a building with a kitchen, restroom facilities and a dining hall. Two additional meeting rooms are also available. The park provides a play area for children, a public beach, picnic areas and outdoor grilling equipment.

In addition the former Emerson City Hall is available for public meetings, parties and banquets. It is located at 124 Second Street.

## City of Euharlee

### **Osborn Park**

Located on Covered Bridge Road across from the Covered Bridge, Osborne Park has the following facilities: lighted and fenced baseball/softball fields; lighted and fenced tennis courts; a walking and jogging trail; children's playground equipment; one lighted pavilion; one unlighted pavilion with a BBQ pit. There also are public restrooms and a concession stand.

### **History Park**

The History Park is located on the south side of Covered Bridge Road and contains a number of historic structures, including the Commissary, the Granary, the History Museum, the Traveler's Well, the Old Mill Ruins, and the Covered Bridge.

Euharlee's facilities are used for a number of community activities. The Commissary is used as a community meeting hall and is available for rent by members of the community for private functions. Each year the parks are utilized for the Euharlee Festival, the Euharlee PowWow, and the Duck Race.

The baseball and softball fields are used by Woodlands Middle School at Euharlee for baseball practice and ball games.

## City of Kingston

### **Kingston City Park**

Located in the City Hall area, Kingston City Park has a baseball field, a playground, a large open space that can be used for soccer or other field sports, a public restroom and several small pavilions with individual picnic tables. A small skateboarding area will be opening soon.

## City of White

### **James A. White Memorial Recreation Complex/Clifford Reynolds Park**

Located across from City Hall, this complex includes a gymnasium, a small gazebo, a baseball/softball field and children's playground equipment.

## City of Cartersville

Cartersville has one of the preeminent parks systems in Georgia. The City of Cartersville operates park and recreation services across 632 acres throughout the city without any restriction based on place of residence. The Cartersville Parks and Recreation Department manages a broad range of beautiful, functional, and well-maintained

facilities that are conveniently located across the City. With an average of over 11 acres of developed parkland per 1,000 population, Cartersville exceeds the “ideal” standard of 10 acres set by the National Recreation and Parks Association. Recreations opportunities abound for biking, hiking, jogging, swimming, tennis, participation in a variety of organized leagues, and other activities. However, reaching the Hispanic population continues to be an issue of concern. As a group, Hispanics are underrepresented in sports leagues organized by the City of Cartersville. The Youth Athletic Mission Statement is to provide quality “recreational” athletic programs for the youth of our community where participation, instruction, sportsmanship and teamwork and achievement in a safe and enjoyable environment. The Cartersville Parks and Recreation Department is a member of Georgia Recreation and Park Association and National Recreation & Park Associations.

The Cartersville Parks and Recreation employs 24 full-time, 12 part-time and up to 35 seasonal employees. A 7-member Recreational Advisory Board provides citizen oversight to the Parks Department and makes recommendations on park-related issues to

<b>Component Type</b>	<b>Current Inventory (2005)</b>
Ball Fields	15
Track/Trail*	4
Tennis Courts	16
Playgrounds	3
Pavilion/Shelters	5
Soccer Fields	5
Pool	1
Basketball Courts	2
Multi-use Fields	2
Gyms/Centers	1
*Includes jogging or running track, walking trail and Vita Course.	

the City Council. This Board meets at least six times per year. To ensure high quality instruction, the Parks Department sponsors training and certification programs for all coaches in its youth programs. The following table provides a summary of the total number of facilities of various types across the city’s park system.

**Recent Improvements**

The following information includes a sample of the additions and improvements to the Cartersville Parks & Recreation Department system that have occurred during the last decade:

- ❖ Built indoor batting facility for Cartersville High baseball complex.
- ❖ Acquired 1.379 acres to add to the Goodyear Clubhouse & parking lot.
- ❖ Poured sidewalks/walking trail for fields 4, 5 & 6 of Dellinger Park.

- ❖ Installed the portion of the Etowah Riverwalk trail from Dellinger Park to the Etowah River.
- ❖ Opened the Gymnastics Plus gymnastics center.
- ❖ Replaced the playground system at Jones Street Park.
- ❖ Acquired 235.204 acres for the Milam Farm Park. Completed area sidewalk/walking trail.
- ❖ Acquired 3.957 acres from Shaw Family Holdings for a pedestrian walkway along the Old Iron Bridge; installed ornamental fencing.
- ❖ Acquired 225 acres for hiking and archery in the Pine Mountain area; completed hiking trails.

### **Dellinger Park**

Dellinger Park is Cartersville's premier park facility and is the location of the main office for the Cartersville Parks and Recreation Department. Dellinger Park has a total of 111 acres, plus the 18-acre "Deerfield Practice Fields." Entrances to the park are on Pine Grove Road and Etowah Drive. The park was originally built in 1975 on a 40-acre tract of land donated to the City by the Dellinger Family. The park was expanded in 1980 on an additional 10-acre tract of land donated by the Dellinger Family. A third expansion was completed in 1983, on a 61-acre tract of land purchased by the City. In addition to 40 acres of undeveloped green space, Dellinger Park has:

- ❖ Thirteen lighted tennis courts;
- ❖ Six softball fields;
- ❖ A football/soccer field with 440 yard track;
- ❖ Two playground areas;
- ❖ Two outdoor basketball courts;
- ❖ Olympic size swimming pool;
- ❖ 2 mile and 1.3 mile walking/running trail with exercise stations;
- ❖ nineteen hole putt-putt golf course;
- ❖ a 4 acre lake and an island gazebo; and
- ❖ Four large picnic shelters and a gazebo.

### **Clearwater Street Park**

Clearwater Street Park is 7.8 acres. Facilities include:

- ❖ Four Baseball fields, also known at the ATCO facility. These include the Rudy York Field, the Joe Frank Harris Field, and two new fields;
- ❖ Three Tennis Courts;
- ❖ Five Batting Cages;
- ❖ Comfort/Concession Stand; and
- ❖ A Clubhouse.

### **Cartersville Soccer Areas**

Soccer areas include two non-adjacent facilities:

The Deerfield Practice Fields include 18 acres that are used for both soccer and football. These fields are grassed, but unlighted.

The Cartersville Soccer Complex induces four new regulation soccer fields. These facilities are adjacent to and on 13 acres of land owned by the Cartersville Middle School are a joint-use project of the Parks Department and School Board. Concession stands are available. These fields have minimal seating and restroom facilities, and only two fields are grassed at this time.

### **Cartersville Baseball Complex**

The baseball complex on Sugar Valley Road is a 32-acre facility, built in 1992, that has:

- ❖ Five baseball/soccer fields;
- ❖ Two batting cages;
- ❖ Concession stand with restrooms;
- ❖ A 1-mile walking/running trail with 18 exercise stations; and
- ❖ A handicap-accessible playground and picnic tables.

### **Aubrey Street Recreation Gym and John H. Morgon Gym**

The Aubrey Street Recreation Gym and the John H. Morgon Gym sponsor such programs as youth basketball, adult basketball and free play basketball.

### **Civic Center and Gymnastics Complex**

Cartersville's Civic Center and Gymnastics Complex are located adjacent to one another in town between West Main Street and Cherokee Street. The 12,000 square foot Civic Center can seat 700-auditorium style and is used for a wide variety of events and meetings. The Gymnastic Center and Gymnastics Plus on Cherokee Street are well equipped with quality apparatus. The Belarus National Men's Gymnastic Team chose Cartersville as their practice site during the 1996 Olympics. Programs are offered for boys and girls 2 and up and include developmental and competitive gymnastics.

### **Summer Hill School**

In 2001, the Etowah Area Consolidated Housing Authority took over ownership of the former school and the adjacent seventeen-acre recreational complex. This property, which had been dormant for many years, now includes a newly renovated baseball field, a nature walk, a new educational facility, a fully equipped gymnasium, tennis court, swimming pools, public picnic areas, and more. The project is a partnership of the EHA, City of Cartersville, Bartow County, Cartersville Parks & Rec., local schools of higher learning, and more. It has stirred a longing in the hearts of the graduates of Summer Hill High School to see a part of their heritage renewed, preserved, and made useful.

### **Neighborhood Parks**

Three one-acre "vest-pocket" parks, outfitted with playground equipment and basketball courts, are popular places for children and families. They are:

- ❖ Fite Street Park
- ❖ Jones Street Park
- ❖ Martin Luther King Jr., Drive Park

## *Plans for Capital Improvements*

Cartersville Parks Department's facilities are so well used that they are now to the point of overcrowding. Registration in youth league programs is nearly at capacity. Adult league programs have been shifted to late evenings, with start-times as late as 10PM, in order to accommodate the burgeoning youth programs. The public has spoken out strongly in support of new facilities. As the city continues to grow it is anticipated that future park projects will be required in order to serve that growth. Parks acreage and facilities that serve new growth can be impact fee eligible. An impact fee based on the current level of service would provide funding for 423 additional acres of parkland and a total of 36 park facilities. The "desired" demand figures are based on current capital plans of the

### **Parks & Recreation Level of Service and Future Demand**

<b>Level Of Service Measure</b>	<b>Current Inventory</b>	<b>Future Demand based on CURRENT LOS</b>	<b>Future Demand based on DESIRED LOS</b>
Acres	632	423	-
Ball Fields	15	10	9
Track/Trail*	4	3	3
Tennis Courts	16	11	7
Playgrounds	3	2	-
Pavilion/Shelters	5	3	-
Soccer Fields	5	3	4
Pool	1	1	1
Basketball Court	2	1	-
Multi-use Fields	2	1	-
Gyms/Centers	1	1	1

\*Includes jogging or running track, walking trail and Vita Course.

department. Note that not all categories are included in those capital plans. Compared to the future projects planned by the Department, the current LOS would result in some impact fee eligible projects in excess of those being considered in some categories (ball fields, tennis courts) and one category where the plans result in a demand beyond that based on the current LOS (soccer fields).

In conjunction with the Cartergrove developers, a development agreement was negotiated to provide for the direct impacts of parkland and connectivity for this

development. The developer is contributing both the site and program costs for a future recreation facility.

The table below describes all park facilities within the county and its municipalities.

## Resource Inventory in Park and Recreational Facilities Bartow County and Respective Municipalities

Park Name	Location	Baseball/ Softball Fields	Basketball	Bicycle Paths	Football/ Soccer	Greenspace/ Natural Setting	Gymnasiums	Historic Sites	Lake/Pond	Music/Cultural Event Facilities	Picnic Facilities	Playgrounds	Rental Facilities /Pavilion	Restrooms	Skateboarding	Swimming Pool	Tennis	Youth Sport s League	Walking/Jogging Paths	Other
Bartow Carver	Bartow County	X							X		X	X	X	X					X	
Bartow Gatewood	Bartow County								X		X	X		X					X	
Center Road	Bartow County												X	X					X	
Hamilton Crossing	Bartow County	X	X		X		X					X	X	X			X	X	X	
Manning Mill	Bartow County	X	X		X		X		X			X	X	X				X	X	
South Bartow	Bartow County	X			X						X	X							X	
Taylorville	Bartow County	X																		
Beazley Gap	Bartow County					X													X	
Hurricane Hollow	Bartow County					X													X	
Springbank	Bartow County					X													X	
Name?	Emerson					X			X		X									
Osborn	Euharlee	X									X	X	X	X			X		X	



# Intergovernmental Coordination

## Introduction

Bartow County is located adjacent to the counties of Cobb, Gordon, Floyd, Pickens, Cherokee, Paulding and Polk. Many of the adjacent counties are used for comparison in the tables and figures within this report. The County cooperates on numerous policies and services with its municipalities, which include Cartersville, Euharlee, Emerson, White, Taylorsville, Kingston and Adairsville. Two school districts, Bartow County Public Schools and City of Cartersville Public Schools are housed within county boundaries.

Formal arrangements are detailed below, but informal, close working relationships characterize the collaboration between the county and its cities. The county's chief elected official is to be credited with an open working arrangement that has benefited all jurisdictions within county limits. Regular communications between county and city officials are the cornerstone of these arrangements.

## Formal Collaborative Arrangements

Bartow is an active participant in the planning process with neighboring counties through the Coosa Valley Regional Development Commission, and collaborates with other communities to protect water resources through the Lake Allatoona Preservation Authority, a state statutory authority and the Army Corps of Engineers. The County coordinates transportation planning with the Atlanta Regional Commission. Bartow County has recently been added to the non-attainment region of the metro Atlanta area for purposes of improving air quality. It is also included in the Etowah Habitat Conservation Planning District (currently being formed) with cities and counties in Etowah Basin, and is a member of the Metro Atlanta Water Planning District. There are 15 neighborhood and community planning units within Bartow County. Planning is accomplished through a collaborative arrangement that is comprehensive and supported by citizens.

The county greenspace program is a good example of comprehensive planning. There are two dedicated staff members at the county level to coordinate the greenspace program. Greenspace property purchases are based on scenic, environmental and historical value.

The county works closely with the Etowah Area Consolidated Housing Authority, which serves over 700 clients in the service area. There are collaborative arrangements with the municipalities on the Convention and Visitors Bureau, Keep Bartow Beautiful programs, recycling programs, animal control services, emergency medical services, indigent (especially elderly) services. A collaborative arrangement for a public safety training facility is under discussion. An arrangement with North Metro Technical College to provide training for local businesses is also an example of both interjurisdictional and public/private cooperation. Cooperative service arrangements exist with other governments to provide public safety, libraries and solid waste services (through the

Bartow Solid Waste Authority). A recent example of cooperative arrangements deals with recreational trails and archeological and green space sites including one located on three former Native American burial mounds.

## Partnerships

The county works to establish partnerships with private industry and business organizations. The Bartow County Environmental Management System is an example of a local public/private partnership which uses state and federal funds to develop model environmental management programs. In addition to collaboration with various Chambers of Commerce in the area, the county is engaged in a number of economic development initiatives with other governments. These include the Cartersville-Bartow County Department of Economic Development (CBCDED), City of Cartersville Development Authority, Bartow County Development Authority and the City of Adairsville Development Authority. These authorities focus much of their efforts on business recruitment. An example of the positive effect of such cooperation is the recent recruitment of the Toyo Tire Company. This successful recruitment was also in collaboration with state of Georgia officials and officials from utility companies. It brought over 100 jobs to the area and netted an increase of 100 million in local investment in 2005. In addition, the CBCDED has the following bank of industrial properties to attract business to the county:

- ❖ Cartersville-Bartow County Corporate Park—new with 846 acres for development.
- ❖ Cartersville West Industrial Park—116 acres in 547 acre park zoned heavy industrial; convenient to I-75; rail access to airport; full infrastructure.
- ❖ Georgia North Industrial Park—almost completely built over, 60 remaining acres; currently includes metal fabrication, compaction roller manufacturer, diesel engine manufacturing, distribution warehouse.
- ❖ Adairsville Industrial Park—178 total acres, completely built out; includes carpet manufacturing, wood products manufacturing, concrete products manufacturing and distribution.
- ❖ CSX Industrial Park---100 acres, tied to CSX Railroad operations. 15 remaining acres; currently housing operations of Trinity Rail, Gerdau Ameristeed and Graham Packaging.

In 2000, the county, municipalities, school districts and major businesses collaborated on a strategic planning process including public hearings, stakeholder meetings, and resulted in the establishment of goals, objectives and clarification of priorities for the county as a whole.

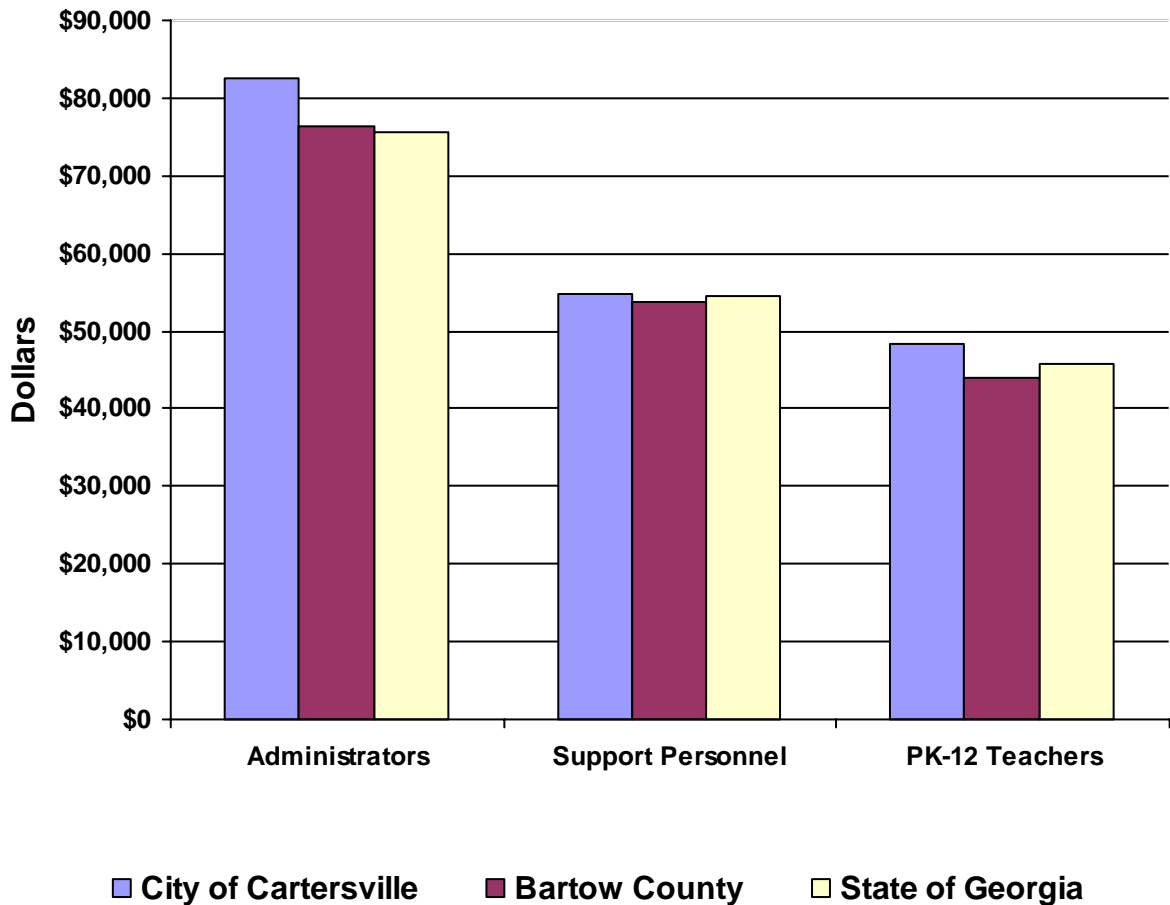
## School boards

The county includes two school districts: Bartow County Schools and City of Cartersville Public Schools. They are independent systems but have collaborative arrangements with

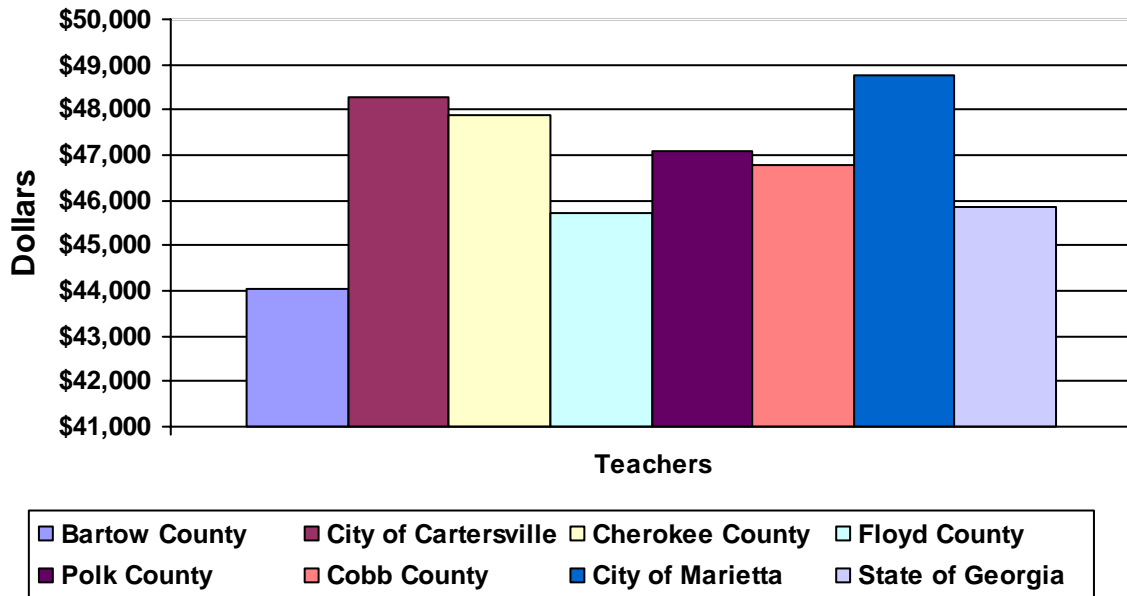
county and city governments for security, recreational use of school facilities and community organizational use of school facilities. The school systems are included in planning meetings and were an integral part of the 2000 strategic planning process. Data presented on the schools systems in the two following sections are taken from the Georgia County Guide for 2005-2006.

Two figures are presented below. As the first figure illustrates, Bartow County and the City of Cartersville pay school system employees at rates comparable to the state average. However, a comparison of teacher salaries for City of Cartersville, Bartow County and selected nearby comparison city and county schools reveals that teachers within the two systems are paid at comparatively lower salaries than their counterparts in other communities.

### School System Personnel Salaries



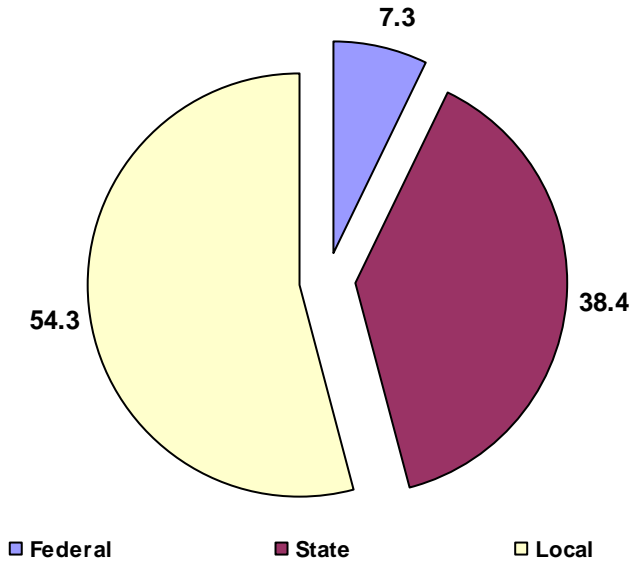
## Average PK-12 Teacher Salaries Bartow County, City of Cartersville and Nearby School Systems



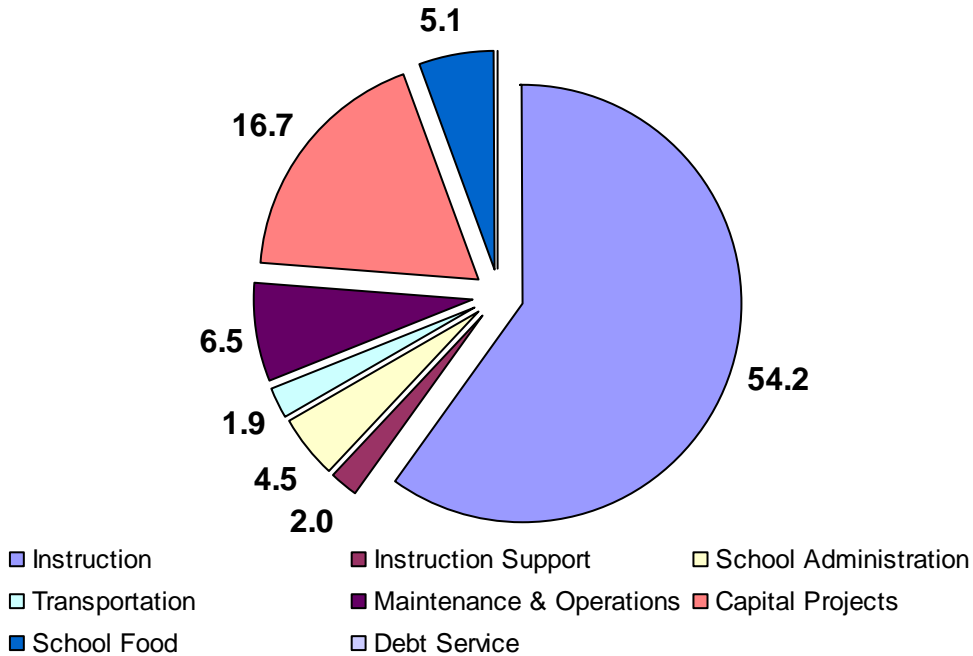
### City of Cartersville Public Schools

The City of Cartersville school system served 3,769 students in K-12 in 2003-2004. Approximately 13% of students were enrolled in gifted programs and about 10% of students were identified as disabled. Six percent of students were identified as having limited English proficiency. Almost 40 percent of students received free or reduced lunch during that year. Forty-six students in grades 9-12 were identified as dropouts, a rate of 4.2%. The City of Cartersville School Board expended \$6,867 per student in 2003-2004, slightly higher than the state average expenditure per student (\$6,728). One hundred seventy-seven students graduated in that year and 70% of those students were eligible for Hope Scholarships. The school system employed 16 administrators, 21 support personnel and 259 teachers in four K-12 schools. The following figures illustrate revenues and expenditures for City of Cartersville schools.

Public School Revenue Sources, City of Cartersville, 2003-2004



Public School Expenditures in Percent, City of Cartersville, 2003-2004

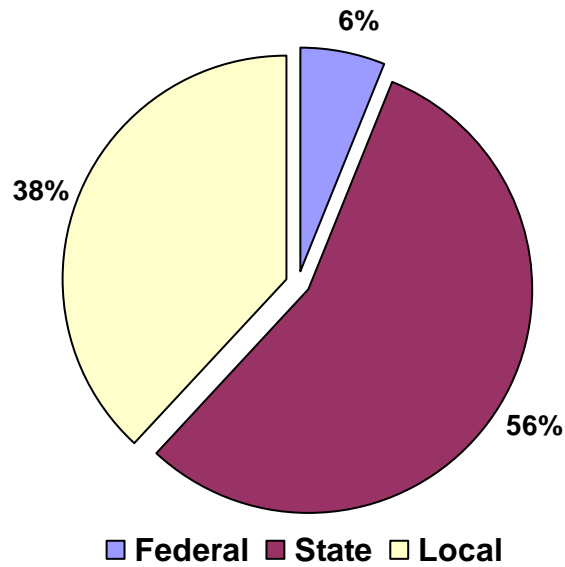


**Bartow County Public Schools**

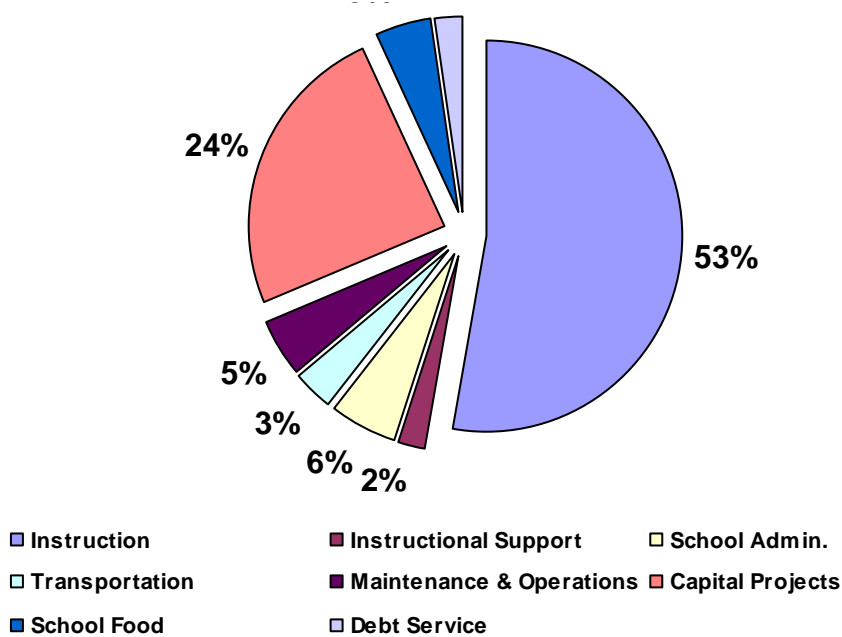
Bartow County Public Schools enrolled 13,368 students in K-12 during the 2003-2004 school year. Ten Pre-K programs also operated within the county enrolling 378 students. Approximately 5.7% of students were enrolled in gifted programs and about 14.7% of

students were identified as disabled. Two percent of students were identified as having limited English proficiency. Almost 40 percent of students received free or reduced lunch during that year. Three hundred twenty-seven students in grades 9-12 were identified as dropouts, a rate of 8.0%. Bartow County's School Board expended \$6,683 per student in 2003-2004, slightly lower than the state average expenditure per student (\$6,728). Five hundred fifty-eight students graduated in that year and 75% of those students were eligible for Hope Scholarships. The school system employed 63 administrators, 76 support personnel and 962 teachers in nineteen K-12 schools. The following figures illustrate revenues and expenditures for Bartow County schools.

Revenue Sources, Bartow County Schools, 2003-2004



## Expenditures, Bartow County Schools, 2003-2004



## Major Grants and Funding Initiatives

Recent examples of collaborative major grant awards within the county include the TEA/Transportation Enhancement Activities Grant from the State of Georgia Department of Transportation for \$900,000 to purchase an archeological site. City of Cartersville was awarded funds to build a bridge to connect this archeological site to a recreational trail system. The county and municipalities have used Community Development Block Grants to fund a Boys and Girls Club facility, an emergency children's facility, the Hickory Log School for mentally disabled men, and a home for victims of domestic violence. Department of Homeland Security funds were used to hire 12 additional firefighters.

Bartow County and the City of Cartersville worked to develop a short term transportation plan to identify priorities and secure funding through SPLOST funds. Current SPLOST funding has been achieved for roads, fire stations, library improvements, restoration of historic courthouse, youth activities centers, and a maintenance shop for county vehicles and equipment. Funds have also been awarded to build a fleet of eight, 12-15 passenger vans to provide on call transportation services to disabled and elderly citizens, and other residents of the county.