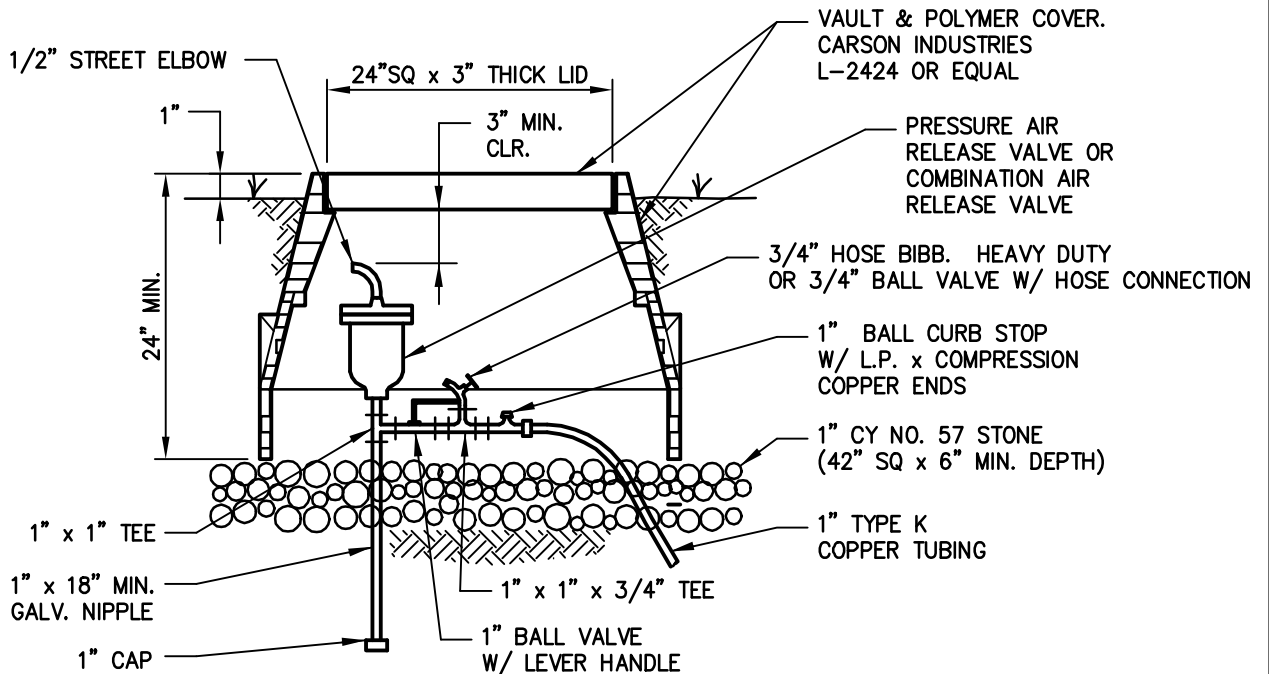


**NOTES**

1. LOCATE AS DIRECTED BY ENGINEER.
2. PIPING INSIDE VAULT TO BE GALVANIZED UNLESS NOTED OTHERWISE.
3. USE 1" TYPE K COPPER TUBING, 36" MINIMUM COVER.
4. TUBING SHALL HAVE A POSITIVE GRADE FROM WATER MAIN TO AIR RELEASE VALVE ASSEMBLY.



**BARTOW COUNTY, GEORGIA**  
 BARTOW COUNTY WATER SYSTEM  
 TELEPHONE (770) 387-5170

**WATER DETAILS**  
**AIR RELEASE VALVE**  
**(FOR NON-TRAFFIC AREAS ONLY)**

DRAWN BY: DVK

SCALE: NTS

DATE: DEC. 20, 2003

DWG. NO.: WAT-15